

MAR / 2025

CENTER MAGAZINE



Expanding Cardboard
Hand Fan From The A.H.
Bradley Funeral Home
c. 1913

FROM THE COLLECTIONS OF THE
MIDLAND COUNTY HISTORICAL SOCIETY

CENTRAL AND
FOR THE
ARTS



The Mattesons
Photography

THANK YOU FOR JOINING US!

Now extended through April 6 by popular demand! We have sent over 8200 patrons and students to outer space with Space Explorers: THE INFINITE in the first 5 weeks of its Midwest debut here at the Center! And there's still time to book your own journey to space - and share the experience with loved ones - with this immersive and interactive space experience, inspired by NASA missions. Only the sixth appearance in North America, our audiences are enthralled with their voyages to space. And you can be too! See page 4 for more information.

We are pleased to welcome an exciting array of performances this month – our very own Midland Symphony Orchestra, joined by renowned Detroit Opera Resident Artists in **MSO An Enchanting Journey**; family-friendly musical party **Timbalooloo**; and Broadway's compelling **Dear Evan Hansen**. This diverse mix of work has something for everyone, offering captivating and entertaining performances that create deep meaning and connection.

Progress continues on construction for our transformative renovation! This will create an innovative Center full of opportunity that will stimulate creativity and foster discovery throughout the entire Great Lakes Bay region. Updates will be shared with you every step of the way. Please see page 24 for more information.

Thank you for attending our events. Whatever your passion, we have a place for you!

Enjoy the show!

TABLE OF CONTENTS

MSO An Enchanting Journey	Pg. 10
Timbalooloo	Pg. 20
Center of Possibility	Pg. 24
Dear Evan Hansen	Pg. 28
Our Circle of Friends	Pg. 45
Center Staff	Pg. 51

MAR / 2025

EXTENDED BY POPULAR DEMAND!

SPACE EXPLORERS
THE INFINITE



**The World's Most Captivating
IMMERSIVE Space Experience**

Don't miss your chance to experience this out-of-this-world adventure with **Space Explorers: THE INFINITE**, bringing the wonder of space exploration to the City of Modern Explorers. Embark on a powerful immersive journey inspired by NASA missions aboard the International Space Station. 360-degree videos captured in space using advanced technology offer you unforgettable astronaut encounters and breathtaking views of the Earth and beyond. Every sensation deepens your connection to the universe and your place within it. It's more than just a simple expedition, it's an emotional odyssey that leaves a lasting impression.

RESERVE YOUR LAUNCH TIME!
NOW – APR 6 / 2025



Presented by Midland Center of the Arts
Produced by Infinity Experiences, Felix & Paul and Phi Studio, in association with Time Studio



MIDLAND CENTER PRESENTS

**NEW & EMERGING
ARTISTS**

PART I



David Huang *Luminosity* 1919

MAR 21 – MAY 18 / 2025
RECEPTION MAR 28 / 5:30 – 7 PM

midlandcenter.org / 989.631.8250

WHERE YOU GO, WE GO

WCMU  Passport

WCMU Passport is an added benefit of station membership. Support WCMU Public Media and get extended access to your favorite PBS shows and films including the entire Ken Burns Collection

SCAN QR CODE



WCMU
PUBLIC MEDIA
CENTRAL MICHIGAN UNIVERSITY

WCMU.ORG

SCAN QR CODE



NPR+ is a collection of podcast benefits that includes bonus episodes, sponsor-free listening, and even early access and archive access for some of NPR's most popular podcasts.

WCMU CLASSICAL

Your home for classical music, all day, every day

Whether you're discovering classical music for the first time or you're a seasoned listener, we invite you to tune to WCMU Classical and let the music speak to you.

Scan the QR code to
learn how to listen to
WCMU Classical



SEE OUR ENTIRE TV & RADIO PROGRAM SCHEDULES AT WCMU.ORG



Proud Sponsor of Educational
Programs and Events

Hit more of life's high notes with Dow Credit Union.

Dow Credit Union is honored to support Midland Center for the Arts' mission of being a regional cultural destination where people find meaning and connection in their lives.



600 E Lyon Rd Midland, MI 48640 | 5420 Gratiot Rd, Saginaw, MI 48638
989.835.7794 or 800.835.7794 | dowcreditunion.org



NMLS ID: 631514

NCUA Insured by NCUA

Diamond View Farms

Tranquil Residential Haven & Thriving Community



DISCOVER EXCEPTIONAL NEW CONSTRUCTION HOMES IN THE CITY OF MIDLAND—YOUR BEST VALUE FOR QUALITY AND AFFORDABILITY IS AT DIAMOND VIEW FARMS!



Community Garden

Choose From 7 Floor Plans
No Age Minimum
5-Star Energy Certified
Barrier Free
Free Standing Homes
You Own Your Home & Lot
\$136/Month Fee for
Lawn, Sprinkler, Snow
Homes Available Now



Scan me



1 Mile Nature Trail



Christina Reimer, Realtor
(989) 430-9099



PHASE III OPENS IN 2025



Dennis Dittenber, Builder
(989) 797-4740

Located where Diamond Drive & Waldo Road intersect

Loves to travel.
Goes the extra mile.

Like all our people, Kevin is driven to perform for our clients. His commitment is second to none.



TriStarTrust.com

KEVIN SCORSONE
VP, Relationship Manager

Your world.

Alive with sound

Imagine living your life with a clearer, closer connection to the experiences and people you love. Allied Hearing can help you get there with a precisely fit hearing solution based upon your individual needs.

Call today to schedule your free hearing screening.

989.303.7773

Mt. Pleasant | 1290 E Broomfield St
Alma | 647 W Warwick Dr
Midland | 4615 Eastman Ave

ALLIED HEARING
Always Hear for You



Shannon Smith, Au.D., CCC-A • Co-Owner
Alyssa Rose, Au.D., CCC-A
Melissa Neu, HIS

AlliedHearing.com





Midland Symphony Orchestra
89th Season

An Enchanting Journey with Detroit Opera Resident Artists

Bohuslav Rattay, conductor

Kendra Faith Beasley, Cole Bellamy, River Guard,
Brianna J. Robinson, and Cameron J. Rolling,
guest artists

March 8, 2025 / 7:30 PM

*Midland Symphony Orchestra's 2024-25 season
is sponsored by Tri-Star Trust*

*Midland Symphony Orchestra programs are made possible
in part through the generosity of Sarah & Dan Opperman
and Ken & Gina Pederson*

An Enchanting Journey

MAR 8 / 7:30 PM

Mozart: *The Magic Flute*
Mahler: *Symphony No. 4*
with Detroit Opera Resident Artists

PROGRAM

Overture to Die Entführung aus dem Serail Wolfgang A. Mozart (1756 - 1791)
(Abduction from the Seraglio)

“Acerba Volutta” from *Adriana Lecouvreur* Francesco Cilea (1866 - 1950)
Kendra Faith Beasley, Mezzo-Soprano

Arias from *The Magic Flute* Wolfgang A. Mozart (1756 - 1791)

“Dies Bildnis ist bezaubernd schön” (Tamino’s Aria)
River Guard, Tenor
“In diesen heil’gen Hallen” (Sarastro’s Aria)
Cameron J. Rolling, Bass-Baritone
“Bei Männern welche Liebe fühlen” (Pamina and Papageno’s Duet)
Brianna J. Robinson, Soprano/Cameron J. Rolling, Bass-Baritone
“Tamino mein, o welch ein Glück!” (Tamino and Pamina’s Duet)
Brianna J. Robinson, Soprano/River Guard, Tenor
“Ach, ich fühl’s” (Pamina’s Aria)
Brianna J. Robinson, Soprano
“Ein Mädchen oder Weibchen” (Papageno’s Aria)
Cole Bellamy, Baritone
“Pa-Pa-Pa-Papageno!” (Papageno and Papagena’s Duet)
Brianna J. Robinson, Soprano/Cole Bellamy, Baritone
Final Chorus: “Heil sei euch Geweihten”
Brianna J. Robinson, Kendra Faith Beasley, River Guard,
Cole Bellamy, Cameron J. Rolling

INTERMISSION

Symphony No. 4 Gustav Mahler (1860 - 1911)

- I. “Bedächtig, nicht eilen” (deliberate, unhurried)
- II. “In gemächlicher Bewegung, ohne Hast” (in measured tempo, unhurried)
- III. “Ruhevoll, poco adagio” (calm, somewhat slowly)
- IV. “Sehr behaglich” (at ease)

Soloist Brianna J. Robinson, Soprano

MSO ROSTER

Violin I

Takeshi Abo***,
Concertmaster
*The Thomas and Vera
Griswold Chair*
Matheus Garcia Souza,
Acting Assoc.
Concertmaster
The Gladys I. Lake Chair
Francesca Azzollini
Yeagi Broadwell
Endi Chen
Melissa Everett**
Sherri Marttila
Tigran Shiganyan
Anna Tsukervanik
Chonghua Zuo

Violin II

Heather DeGroot***,
Principal
*Sponsored by
Sarah Dergazarian*
Wang Liang,
Acting Asst. Principal
Elaine Hunyadi***
Piaras Kent
Geunyoung Kim
Susan Mercy
Katie Siegfried
Hsin-Ju Yu*

Viola

Alicia Valoti,
Acting Principal
*The Ken and Gina
Pederson Chair*
Jessica Zelinski**,
Asst. Principal
Saraí Aboites-Núñez
Matthew Forsleff
Howard Jones
Rebecca Reuter

Cello

Cathy White***, Principal
The Phoebe Barstow Chair
Christopher Landis,
Acting Asst. Principal
The Phoebe Barstow Chair
Sara Moore**
Greg Stawick**
Wendy Stuart

Bass

Jonathan Hammonds,
Principal
The Ruth D. Stenger Chair
David Angelotti***,
Asst. Principal
William Poulos*
Joy Rowland*

Flute/Piccolo

Joanna White**, Principal
*The Tina and Philip
Van Dam Chair*
Kassia Martin*
The Judy Philips Chair
Cathy Webster***
Tess Miller

Oboe/English Horn

Lindabeth Binkley,
Principal
The Vernon A. Stenger Chair
Asako Furuoya
Yuki Harding

Clarinet/Bass Clarinet

Sam Martin, Principal
Sponsored by Patricia Clark
Grant Von Wald**
Kennen White

Bassoon/ Contrabassoon

Marybeth Minnis,
Acting Principal
Jennifer Dean**
Cindy Duda

Horn

Kurt Civilette*, Principal
The Robert T. Ralston Chair
Julie Schleif, Acting
Asst. Principal
Robin Von Wald***
Michael Wright*
Nicole Minney

Trumpet

Grayson Gayle,
Acting Principal
*Sponsored by
Nina & David Frurip*
Jim Young*
Joshua Dolney

Timpani

Robert Kratz-Hahn*, Principal

Percussion

Michael Giunta, Principal
*The Tina and Philip
Van Dam Chair*
Chris Peeler**
Brendan Betyne
Ken Yagiela

Harp

Joan Holland**

Celeste

Catherine McMichael

Librarian & Personnel Manager

Robin Von Wald***

*10-19 Service Years

**20-29 Service Years

***30+ Service Years

+MSO/CMU

Undergraduate Fellow

• *Sponsored chair*

ABOUT THE DETROIT OPERA RESIDENT ARTIST PROGRAM

The Resident Artist Program is led by renowned opera coach and pianist Nathalie Doucet, Detroit Opera's Head of Music. The program offers individualized study to cater to the unique needs of each artist and aligns with the country's top training programs. Detroit Opera serves as a nurturing home for these rising stars, supporting and helping them achieve their full potential in the highly competitive opera industry. The program builds on the strong foundations of the Studio Artist program founded by the late Dr. David DiChiera, the company's founder, while embodying the forward-looking leadership of Gary L. Wasserman, Artistic Director Yuval Sharon, and President and CEO Patty Isacson Sabee.

Resident Artists commit to an intensive program while living in Detroit from September through May, training directly with Doucet and other members of the Detroit Opera community in specially crafted and individualized curricula of voice, movement, language, and career guidance. In addition to their hands-on training, Resident Artists have opportunities to perform in Detroit Opera mainstage productions, giving them access to work with guest artists, directors, and conductors.

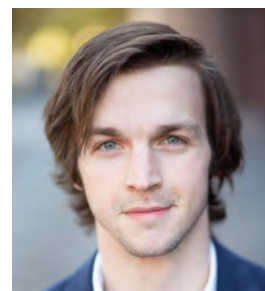
In keeping with Detroit Opera's longstanding focus on making opera accessible to the surrounding community, Resident Artists forge direct ties to Detroit through recitals, concerts, and other collaborations with local schools, nonprofit organizations, businesses, and institutions. Resident Artists perform regularly during the season for patients at Detroit's Henry Ford Hospital and in public concerts throughout Detroit and the state of Michigan.

MEET THE DETROIT OPERA RESIDENT ARTISTS



Mezzo-Soprano, KENDRA FAITH BEASLEY, acclaimed by *Opera News* for her “big voice, powerful at both extremes of the range,” made her debut in Des Moines Metro Opera in the 2023-2024 season. As an Apprentice Artist with DMMO, Kendra took on the dual roles of Florence McKeller/Mrs. Smithson in Lila Palmer and Damien Geter's riveting opera, *American Apollo*. With recent successes including standout performances as Berta in Cincinnati Opera's *Il barbiere di Siviglia* and Girlfriend #3 in New Orleans Opera's

Blue, Kendra's talent continues to captivate audiences. Notably, she premiered the role of “Raksha” in the Glimmerglass Festival's innovative adaptation of *The Jungle Book* in 2022, under the direction of Francesca Zambello. A distinguished alumna of the Cincinnati Conservatory of Music with an Artist Diploma and the University of Kentucky with a master's degree in performance, Kendra's achievements reflect her dedication to her craft. Her exceptional talent was further recognized when she was chosen from a pool of hundreds of applicants to become one of Detroit Opera's esteemed Resident Artists for the 2024-2025 season. During her residency with Detroit Opera, Kendra will grace both the Detroit Opera House stage and various other performance venues with a richly-filled schedule.



Baritone COLE BELLAMY hails from Olathe, Kansas. In 2024, Cole made his debut at Santa Fe Opera as an Apprentice Singer in the world premiere of Gregory Spears' *The Righteous* (Deacon 1). In the 2023-2024 season, Cole was a studio artist at Opera NEO in San Diego where he was featured in the annual Aria Gala at the Conrad Prebys Performing Arts Center and was described by the *San Diego Story* as a “rich baritone” with “commanding presence and fearless declamation”. In the same season, he was a first-place

winner in the 2024 Madame Role Palmai-Tenser Scholarship competition hosted by Mobile Opera. Cole's solo professional debut was with Wichita Grand Opera in *Il barbiere di Siviglia* (Fiorello) and he made his professional concert debut with Tallahassee Community Chorus as the baritone soloist in Carl Orff's *Carmina Burana*. As a masters' student at Florida State University, Cole has participated in numerous productions by the Florida State Opera, including Previn's *A Streetcar Named Desire* (Stanley Kowalski) and Rossini's *Il barbiere di Siviglia* (Figaro). He completed his undergraduate studies at Wichita State University where he performed in several productions, including *Così fan tutte* (Guglielmo) and *Street Scene* (Frank). Additionally, he sang the baritone solos in the university choir's performances of Brahms' *Requiem* and Orff's *Carmina Burana*.



Tenor RIVER GUARD, hailing from Hamilton, Ontario, Canada, boasts an impressive musical journey. He received The Rebanks Family Fellowship and International Performance and Residency Program from The Glenn Gould School in 2021 and is an alumnus of The Aspen Music Festival and School (2019) and the Opera in the 21st Century program at The Banff Centre for Arts and Creativity (2018). Notable roles include Lenksy in *Eugene Onegin* (Highlands Opera Studio), Male Chorus in *The Rape of Lucretia* (The Glenn Gould

School), Rinuccio in *Gianni Schicchi* (ICAV Institut Canadien d'Art Vocal), and Miles in Missy Mazzoli's *Proving Up* (Aspen Music Festival and School). River has also covered the roles of Cavaradossi in *Tosca* and Salm Polk in *Susannah* at the Opera Theatre of St. Louis and the Detroit Opera Resident Artist Program, where he took on Pinkerton in *Madama Butterfly* and Dr. Richardson in *Breaking the Waves* by Missy Mazzoli. His versatility extends to performances with the Detroit Chamber Winds and Strings as Soldat and Harlekin in Viktor Ullmann's *Der Kaiser von Atlantis*. River, a graduate of Wilfrid Laurier University and the University of Toronto Opera School, debuted on the Detroit Opera stage this season in Janáček's *The Cunning Little Vixen* as Pasek. In the 2024 summer season, River was a member of the Florentine Opera Summer Studio Ensemble and returned as a Detroit Opera Resident Artist for a second year in the fall.



Soprano BRIANNA J. ROBINSON, whom *The Boston Globe* proclaimed as, "...a radiant voice and presence," is a native of Ravenna, Ohio and a proud graduate of Ohio Wesleyan University and the Eastman School of Music. A former Jane and Steven Akin Emerging Artist with Boston Lyric Opera, she covered and performed roles such as Lucy in Gregory Spears' *Fellow Travelers*, Mimi (cover) in Puccini's *La Bohème*, Lena in Ana Solokovic's *Svabda* and several roles (cover) in Paul Ruders' *The Handmaid's Tale*. She recently stepped in as Julie in Rhiannon Giddens and Michael Abels' 2023 Pulitzer Prize-winning opera, *Omar*. In the 2023-2024 season, she made her Carnegie Hall debut with The Cecilia Chorus of NY in Ralph Vaughan Williams' *Dona nobis pacem* and was a District Winner in the Metropolitan Opera Laffont Competition. Brianna also made several orchestral debuts including the Akron Symphony Orchestra, Claflin Hill Symphony Orchestra/New World Chorale, and the Handel and Haydn Society in the powerful performances of 'Crossing the Deep'. Ms. Robinson was named a finalist in the Benjamin Matthews Vocal Competition with Opera Ebony and was awarded first prize at the 6th Getting to Carnegie Competition. She made her international debut in Ruse, Bulgaria in 2021 creating the role of Ophelia in the world premiere of Joseph Summer's *Hamlet*. Brianna returned to Boston Lyric Opera in 2024, in the role of Leontine in Joseph Bologne, Chevalier de Saint-George's *The Anonymous Lover*. <https://www.briannajrobinson.com/>



Bass-Baritone CAMERON J. ROLLING hails from Waycross, Georgia and is recognized for his "mellifluous baritone" (*Classical Voice San Francisco*) in the realms of opera, oratorio, symphonic, and recital performance. As a 2023 Young Artist at the prestigious Merola Opera Program, Cameron performed the role of Junius in Benjamin Britten's *The Rape of Lucretia*. He was selected as a Young Artist for the Glimmerglass Festival for the 2024 season where he sang the role of Sylvano in Cavalli's *La Calisto* and covered the roles of Mr. Lister/Karl Marx/Voiceover/Solomon Weil/Witness #8 in Kevin Puts' *Elizabeth Cree*. In November 2024, he made his symphonic debut as the bass soloist for Beethoven's *Symphony No. 9* with the Savannah Philharmonic. Recent performances include the role of Guglielmo in Mozart's *Così fan tutte* (UMKC Opera), bass soloist in Bach's *Jesu Meine Freude* and Mendelssohn's *Elijah* (UMKC), as well as bass soloist in Handel's *Messiah* (Spire Chamber Ensemble). He has also served as chorus master for Massenet's *Chérubin* (UMKC Opera). Cameron won first place in the 2020 Classical Singer Magazine's national voice competition. He holds Master of Music degrees in Choral Conducting and Vocal Performance from University of Missouri-Kansas City Conservatory (UMKC) and a Bachelor of Music degree in Music Education with concentrations in voice and conducting from Mercer University.

CONDUCTOR BIO



BOHUSLAV RATTAY, Music Director

Czech-American conductor Bohuslav Rattay is a busy ambassador for classical music, working with orchestras across the globe to produce symphonic works of all kinds to a diverse audience. Currently serving as Music Director of the El Paso Symphony Orchestra and the Midland Symphony Orchestra of Michigan, he has gained a reputation as one of the finest talents of his generation. Mr. Rattay combines impassioned and virtuosic musicianship with a determination to bring great music into the lives of all people.

Mr. Rattay strives to enthusiastically promote both the traditional and innovative aspects of classical music together in a manner exciting and fresh for the audience. He designs unique concert programs, incorporating special audience discussions and multi-media elements. He is also appreciated for his passion for the classics, with special appreciation often given to his insightful understanding of the music of his native Bohemia. Critics have praised Mr. Rattay for his ability to communicate the depth and diversity of music to his audience, acclaiming: "Rattay is certainly the man for Tchaikovsky's fourth" (*Charleston Today*), and for the fashionable, "Watching him conduct is like watching a painter creating rich imagery to live music on a large canvas" (*El Paso Times*). His programming is intelligent and expansive, allowing him to connect to a broad range of audience, thus creating new symphony-goers while entertaining the enthusiasts.

Mr. Rattay's talents and abilities are highly praised. He is internationally acclaimed by critics and audiences alike for his fresh and inspired musical interpretations. He has received accolades for his "vibrant" performances and his "elegant panache," (*Charleston City Paper*), his ability to lead the orchestra with his "infectious zest and physicality," (*Midland Daily News*), and his one-of-a-kind artistry, bringing "personal perspective... that will be remembered for many years," (*Duluth N5ews Tribune*). His overflowing passion for classical music is highly solicited, appearing as Guest Conductor with the Colorado Symphony, the Duluth-Superior Symphony, the Lubbock Symphony Orchestra, the Bogota Sinfonica de Colombia, the Antalya Symphony in Turkey, and the Teplice Philharmonic in his native Czech Republic. Other recent engagements include the Virginia Symphony, West Michigan Symphony, the Irving Symphony Orchestra, Prague's Dvořák Symphony Orchestra, and the Charleston (SC) Symphony, where he received several critical accolades. He has also conducted the National Symphony Orchestra as part of the National Conducting Institute and was selected by the American Symphony Orchestra League to participate in its Conducting Fellowship Program.

Believing in the power of education, Mr. Rattay is a committed pedagogue of the younger generations. He recently joined the music faculty at the University of Texas at El Paso, and has been a faculty member of the College of William and Mary, Ball State University, and youth orchestras across the United States. The combination of his youthful energy along with his conducting skills make him highly valued as an inspirational mentor.

Mr. Rattay holds degrees from the Prague Conservatory, Rice University, and the Peabody Institute of Music. He names Gustav Meier, Larry Rachleff, Benjamin Kamins, and Neeme Jarvi as his most influential teachers.



MIDLAND COMMUNITY ORCHESTRA
Conductor, Gina Provenzano

All concerts are FREE at Bullock Creek Auditorium

MCO CONCERT DATES:

3:00 PM	November 3, 2024	February 16, 2025	April 27, 2025
---------	------------------	-------------------	----------------

MCO-Youth CONCERT DATES:

2:00 PM	November 2, 2024	February 15, 2025	April 26, 2025
---------	------------------	-------------------	----------------

Free for students grades 6-8 starting in September!
www.midlandcommunityorchestra.com



2025 SUMMER CAMPS
 ON SALE NOW!
midlandcenter.org / 989.631.8250



FEEL THE SPIRIT



PURCHASE YOUR TICKETS TODAY!



Midland Concert Band

2024/2025 Concerts

Sunday, October 13th 2024
 Sunday, December 15th 2024
 Sunday, March 23rd 2025
 Sunday, May 4th 2025

All concerts begin at 3pm at Midland Center for the Arts



chippewa naturecenter
Venture Out!

April 11 & 12
 7 pm • Bullock Creek Auditorium

Different Film Line-ups Each Night!

BANFF CENTRE
 MOUNTAIN FILM FESTIVAL WORLD TOUR

banffmountainfestival.ca/tour

Sponsored locally by:

- Midland MI
- THE LITTLE FORDS CONSERVANCY
- NOR-EAST OUTDOORS
- SAGINAW VALLEY STATE UNIVERSITY COLLEGE OF SCIENCE, ENGINEERING & TECHNOLOGY
- TRI-CITY MUSHROOMS

Print Sponsor: **QRP** Quick Reliable Printing

Tickets on sale now!
www.chippewanaturecenter.org



EVERY Stage

A business partner you can start, grow, and stay with.

The power of E

1st STATE BANK
 The bank for business.

989.799.7500
1stState.Bank

Member FDIC

A portrait of Oran Etkin, a man with dark hair and a beard, wearing a blue suit and an orange tie. He is holding a clarinet and looking towards the camera with a slight smile. The background is a solid dark red.

Timbalooloo
MAR 9 / 2025

ABOUT TIMBALOOLOO

Timbalooloo is an innovative play-based approach to teaching music inspired by the way children learn languages fluently at a young age. Instruments come to life as characters and children learn to express themselves by making their instruments come alive and talk, linking rhythms and melodies to spoken word. We draw on music of great masters from cultures around the world, from Herbie Hancock to Jobim, Mozart to Babtunde Olatunji. We strive to empower a new generation to become as fluent in the language of music as they are in their mother tongue and to experience the beauty in other cultures with a sense of curiosity, sharing and creativity. Through our highly trained Timbalooloo teaching artists, we offer classes through various partner schools and community organizations. Timbalooloo is based in New York but is active internationally. We tour Timbalooloo live concerts at major venues worldwide, and have begun licensing the method and providing teacher training to partners so they can spread the joy of Timbalooloo to their communities. Our partners in Prague and Mladi Ladi Detem have 14 trained Timbalooloo teaching artists and reached over 5,000 children in schools throughout the Czech Republic last year! In California we have partnered with San Jose Jazz, training the teaching artists in their Progressions program. And our partnership with Herbie Hancock Institute and UNESCO has reached thousands of children worldwide through online classes.

For more information visit Timbalooloo.com.

MEET ORAN ETKIN!

Oran Etkin has been described as “ebullient” by *The New York Times*, and voted #1 rising star clarinetist in *DownBeat Magazine’s* Critics’ Poll. His music can be heard on major concert stages throughout the world and a Grammy Award-winning compilation, but he is also equally at home sitting cross-legged on the floor, surrounded by a gaggle of children as he shows them how to make instruments come alive and speak the language of music. Etkin’s project for children, Timbalooloo, is one of the few young-audience productions to be embraced by major theaters and jazz festivals all around the world — from Kennedy Center to Istanbul Jazz Fest, North Sea Jazz to Shanghai Theater. Now with his latest Timbalooloo album and live-show, “Finding Friends Far From Home, A Journey With Clara Net,” Etkin shares his love of cultures from around the world with children back home. The album was recorded on location in Zimbabwe, Czech Republic, Turkey and China and tells a story of Clara Net (Etkin’s clarinet) meeting new instrument friends and creating new music across cultural boundaries.

Etkin is on the faculty of The New School University and has also appeared as a guest lecturer at Harvard University. French newspaper *Libération* chose his Paris concert as one of the top 6 musical events of the year, hailing it as “a concert of weightlessness, class, spark, inspiration and sharing. Magic uninterrupted... for such is the music of Etkin: sensitive to the exchange with the audience.”

Enjoy today’s concert?

We’ve created a website just for you to continue the experience at home:
www.timbalooloo.com/midlandcenter

SPONSORED BY

**UNITED BAY COMMUNITY
CREDIT UNION**



**TOMMY'S
EXPRESS
CAR WASH**

NOW OPEN!
1303 S. Saginaw Rd • Midland

Sunday • 8 am - 6 pm
Monday • 7 am - 8 pm
Tuesday • 7 am - 8 pm
Wednesday • 7 am - 8 pm
Thursday • 7 am - 8 pm
Friday • 7 am - 8 pm
Saturday • 7 am - 8 pm

Enjoy your snacks & beverages, but **PLEASE NOTE** your cups must be **EMPTY** when you leave the building. **THANK YOU!**



MIDLAND
CENTER
FOR THE
ARTS




Warner Norcross + Judd
proudly supports the
Midland Center for
the Arts - Relaxed
Performances

Relaxed performances create a supportive and welcoming environment for those with autism spectrum disorder (ASD), developmental disabilities, sensory processing disorder, PTSD, and other sensory sensitivities to enjoy live performances along with their families. We are honored to help make the arts available to all through these specially designed experiences.



Warner
wnj.com



**SportClips[®]
HAIRCUTS**

**A STANDING OVATION
STARTS WITH YOUR HAIR.**

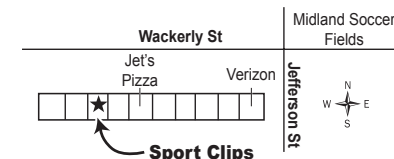
Hot Steamed Towel • Massaging Shampoo • Neck & Shoulder Treatment • Precision Cut

VETERANS & ACTIVE MILITARY RECEIVE
20% OFF ANY HAIRCUT SERVICE
when you present your valid service ID



All New Clients Receive a FREE MVP Upgrade!

Midland
219 W Wackerly St
Jefferson & Wackerly,
near Jet's Pizza
989-486-3841



Check In Online at SportClips.com/MI702C
Mon-Fri: 9am-8pm • Sat: 9am-6pm • Sun: 11am-5pm

*Not valid with any other offer. Valid ID Required. Valid only at Midland, MI Location.

CHECK IN ONLINE OR WALK-INS  **WELCOME**

CENTER OF POSSIBILITY

RENOVATION & CAPITAL CAMPAIGN

We thank these foundations, individuals, and companies for their leading support of our transformational renovation:

Dow Company

The Herbert H. & Grace A. Dow Foundation

Rollin M. Gerstacker Foundation

State of Michigan

Hemlock Semiconductor

James R. & Anita Horne Jenkins Family Foundation

William & Linda Stavropoulos

Charles J. Strosacker Foundation

Lisa & Howard Ungerleider

Frank & Jean Popoff

Harry A. & Margaret D. Towsley Foundation

US Department of Housing and Urban Development

Stephen & Kristy Carras

Dow Credit Union

Jim Fitterling & Alex Lee

Marcia Haywood

Patricia & David Kepler
Foundation

Midland Area Community
Foundation

Sarah & Daniel Opperman

Ken & Gina Pederson

Catherine & David Ramaker

Bill & Cynthia Schuette

J. Donald & Angela Sheets

Consumers Energy Foundation

Mike & Rhea Dow

Mark & Anne Flegenheimer

Michael & Claudia Goad

Neil & Annmarie Hawkins

MyMichigan Health

Jill & John Sampson

Spence Brothers

Beth & Graham Taylor Family Fund

Harvey Randall Wickes Foundation

Amy & John Wilson

Our Renovation Is In Progress!

OUR INTENT

- / Maintain programs that bring an array of guest artists, professional symphony concerts, Broadway shows, and award-winning theatre to our community.
- / Renew and expand the Art & Science Museum exhibit areas with modern technology and interactivity to promote discovery and expression.
- / Refresh and relocate our World-Class Studios to the north of the building to deliver professional art instruction and creative activities.
- / Deliver an elevated guest experience including a refreshed main entry/lobby with multi-level views and new activity spaces for community gatherings, meetings, and celebrations.

OUR CURRENT ACTIVITY

- / We have completed Auditorium restrooms and concessions enhancements for increased capacity and ADA accessibility.
- / Work has started on the wing to the Auditorium's west that will deliver new community gathering rooms, restrooms, a full-service kitchen, and ADA accessibility and seating on the upper level of house right.
- / We finished the schematic design of the exhibit areas utilizing local focus groups led by selected vendors who provide an international perspective.
- / We completed the design of our new Studio Wing, offering expanded opportunities for community engagement.



Help **Support** The Center's
Transformational Renovation

midlandcenter.org/campaign





Help for Care Partners!

Senior Services offers support groups, trainings and events that provide skills and knowledge that will help you better fulfill your role.

Reach out today, call 989-633-3700!

 **SENIOR SERVICES**   

SeniorServicesMidland.org 4700 Dublin Ave • Midland, MI 48642



SAVE YOUR TICKET!

Stop by a participating QDOBA LOCATION & redeem your ticket for a **BUY ONE GET ONE FREE ENTRÉE!**

Valid at Midland, MI. Please see location rules. One day per coupon. No cash back. No exchange. Information can be found at midlandcenter.org. QDOBA Mexican Eats is a registered trademark of the QDOBA Mexican Eats Corporation. Ticket Office at 989.633.8250.



Arts and entertainment enthusiasts! Foodies! Artisanal coffee lovers! Theater and concert goers! Boutique shoppers!

Savor the charm and riverfront vibe of Bay City, just a short drive away from Midland. Plan ahead to ensure your travels over the river are easy and convenient.

Contact info@baycitybridgepartners.com or call 989.272.2038 to create a BC-PASS account to pay just \$2 per crossing on Liberty and Independence bridges.



QRP
Beyond Print

Order online at QRP.ink

TRUSTED PRINTER

of the Great Lakes Bay Regions' most successful businesses since 1979

Services:

- Commercial Printing | Roll & Sheet Labels | Signs & Banners
- Direct Mail Marketing | Bindery & Finishing | Promotional Products
- Creative Services | Warehousing & Fulfillment | Online Ordering

Where Paper + Possibilities Connect.

3000 James Savage Rd | Midland, MI | **989.496.2955**



Wealth Enhancement®
The Gavin Team

**BROADWAY
& BEYOND
SERIES**

THE TONY AWARD-WINNING
BEST MUSICAL

DEAR EVAN HANSEN

**"THEATRICAL
MAGIC."**
The Washington Post

**"ONE OF THE
MOST REMARKABLE
SHOWS IN MUSICAL THEATRE
HISTORY."**
The Washington Post

MAR 18 – 20 / 2025

SPONSORED BY



Crossroads Live
presents

DEAR EVAN HANSEN

Book by
STEVEN LEVENSON

Music & Lyrics by
BENJ PASEK & JUSTIN PAUL

MICHAEL FABISCH HATTY RYAN KING BRE CADE CAITLIN SAMS
ALEX PHARO JEFF BROOKS GABRIEL VERNON NUNAG MAKENA JACKSON
MICHAEL PEREZ MONICA BLUME JULIANNA BRAGA
BLAKE EHRLICHMAN DALE OBERMARK

Scenic Design
DAVID KORINS

Projection Design
PETER NIGRINI

Costume Design
EMILY REBHOLZ

Lighting Design
JAPHY WEIDEMAN

Sound Design
NEVIN STEINBERG

Casting
MURNANE CASTING
CHAD ERIC MURNANE, CSA
AMBER SNEAD, CSA

Music Coordinator
TALITHA FEHR

Vocal Arrangements &
Additional Arrangements
JUSTIN PAUL

Music Director
MICHAEL HOPEWELL

Production Stage Manager
ANNA KLEVIT

Company Manager
AARON MARTIN

Tour Management
CROSSROADS LIVE
NORTH AMERICA

Production Manager
GREGG DAMANTI

General Manager
ANDREW TERLIZZI

Executive Producer
JAYNA NEAGLE

Exclusive Tour Direction
THE BOOKING GROUP
MEREDITH BLAIR

Tour Marketing & Publicity
BOND THEATRICAL

Social Media
THINK TANK
MARKETING

Direction Recreated by
DANNY SHARRON
MARK MYARS

Associate Music Supervisor
BEN COHN

Choreography Recreated by
MARK MYARS

Music Supervision, Orchestrations & Additional Arrangements
ALEX LACAMOIRE

Original Broadway Production Choreography by
DANNY MEFFORD

Original Broadway Production Directed by
MICHAEL GREIF

Originally Produced on Broadway By Stacey Mindich
Originally presented by Arena Stage - July 9, 2015 to August 23, 2015
New York premiere at Second Stage - March 26, 2016 to May 29, 2016

"Dear Evan Hansen" is presented through special arrangement with MUSIC THEATRE INTERNATIONAL, New York, NY. www.mtishows.com

CAST



Michael
Fabisch



Hatty Ryan
King



Bre
Cade



Caitlin
Sams



Alex
Pharo



Jeff
Brooks



Gabriel Vernon
Nunag



Makena
Jackson



Michael
Perez



Monica
Blume



Julianna
Braga



Blake
Ehrlichman



Dale
Obermark

CAST

(listed in alphabetical order)

Heidi Hansen.....	BRE CADE
Larry Murphy.....	JEFF BROOKS
Evan Hansen	MICHAEL FABISCH
	(Select performances) MICHAEL PEREZ
Alana Beck.....	MAKENA JACKSON
Zoe Murphy	HATTY RYAN KING
Jared Kleinman	GABRIEL VERNON NUNAG
Connor Murphy.....	ALEX PHARO
Cynthia Murphy.....	CAITLIN SAMS

VIRTUAL COMMUNITY VOICES

JACOB ANDERSON, NAREE ASHERIAN, KARALYN CLARK, VITA DREW,
ADAM DUNSON, AYLER EVAN, WILL HALEY, TODD HART, ROBERT HYATT,
PAUL JOHNSON, BRANDON NIX, DANICA RUIZ, JOLANA SAMPSON-WILLIAMSON,
CHRISTINE SHEBECK, CONNOR SIMPSON, KATE STEELE, NICOLE UNGER

UNDERSTUDIES

Standbys and understudies never substitute for players
unless a specific announcement for the appearance is made at the time of the performance.
Understudy for Evan Hansen, Connor Murphy, and Jared Kleinman: BLAKE EHRLICHMAN;
Understudy for Evan Hansen, Connor Murphy: MICHAEL PEREZ; Understudy for Heidi Han-
sen, Cynthia Murphy, Alana Beck: MONICA BLUME; Understudy for Alana Beck, Zoe Mur-
phy: JULIANNA BRAGA; Understudy for Larry Murphy: DALE OBERMARK.

Dance Captain: MONICA BLUME

DEAR EVAN HANSEN

WILL BE PERFORMED WITH ONE 15-MINUTE INTERMISSION



The use of any recording device, either audio or video, and the taking of photographs, either with or without flash, is strictly prohibited by law. Please turn off all electronic devices such as cellular phones, beepers and watches prior to the beginning of the performance.

MUSICAL NUMBERS

ACT ONE

"Anybody Have a Map?"Heidi, Cynthia
 "Waving Through a Window"Evan, Company
 "For Forever"Evan
 "Sincerely, Me"Connor, Evan, Jared
 "Requiem"Zoe, Larry, Cynthia
 "If I Could Tell Her"Evan, Zoe
 "Disappear"Connor, Evan, Alana, Jared, Cynthia, Larry, Zoe
 "You Will Be Found"Evan, Company

ACT TWO

"Sincerely, Me" (Reprise)Connor, Jared
 "To Break in a Glove"Larry, Evan
 "Only Us"Zoe, Evan
 "Good for You"Heidi, Alana, Jared, Evan
 "You Will Be Found" (Reprise)Company
 "Words Fail"Evan
 "So Big/So Small"Heidi
 "Finale"Company

MUSICIANS

Music Director, Keys: MICHAEL HOPEWELL
 Associate Music Director, Keys Cover: ALEX GUTIERREZ
 Violin/Concertmaster: AMANDA NIX
 Viola: JESSICA GEHRING
 Cello: DAVID WARNER
 Guitar 1: PERRY COWDERY
 Guitar 2: JEFFERY DUNN
 Bass: JACKSON HOPPER
 Drums: DANIEL SANTIAGO

Keyboard Programmer: RANDY COHEN, RANDY COHEN KEYBOARDS
 Ableton Programmers: ENRICO DE TRIZIO, SCOTT WASSERMAN

WHO'S WHO IN THE CAST

MICHAEL FABISCH (*Evan Hansen*). A Minnesota born actor/singer, Michael recently earned his BFA from the University of Michigan. Michael would like to extend his heartfelt gratitude to his brilliant mentors, his loving family and his caring friends for their immense support.

HATTY RYAN KING (*Zoe Murphy*). National Tour debut! Previous credits include Anna in *Frozen: A Musical Spectacular* (Disney Cruise Line), Belle in *Beauty and the Beast* (Studio Tenn), Cathy in *The Last 5 Years* (Everblue Arts). Huge thanks to Murnane Casting, The Price Group, and Mom. @hattyryanking.

BRE CADE (*Heidi Hansen*) is happy to be here! Past favorite credits include: *Rabbit Hole* (Becca), *Next to Normal* (Diana), *Into the Woods* (Baker's Wife), *Evita* (Eva Peron), *Cabaret* (Sally Bowles), and *Hedwig & the Angry Inch* (Yitzhak). Love to Zac. @brefreakincade

CAITLIN SAMS (*Cynthia Murphy*). National Tours: *Charlie and the Chocolate Factory*, *Elf*, *Flashdance*. Regional: *Beautiful*, *CATS*, *Legally Blonde*, *Escape to Margaritaville*, *Brigadoon*, *Kinky Boots*, and many more. BFA from WMU. Big thanks to my family. Big love to Dale. @unsophitacaitlin www.caitlinsams.com

ALEX PHARO (*Connor Murphy*) is thrilled to make his national tour debut! Proud Auburn University deferred student. Credits: *The Wedding Singer* (Robbie), *Natasha, Pierre, and the Great Comet of 1812* (Anatole). Shout out to Mom, Dad, Big Cheese, Larrie, DC, and Zola! @alexpharo

JEFF BROOKS (*Larry Murphy*). He/him. National Tours: *Chicago*, *A Bronx Tale*, *Bullets Over Broadway*, Disney's *Beauty & the Beast*, *Fiddler on the Roof*, *The Sound of Music*, *Oklahoma!*. Netflix's "The Watcher." Thanks to Todd, Bob and everyone at ATB, my loving family, friends, and Stef. @bathrobedbrooks

GABRIEL VERNON NUNAG (*Jared Kleinman*). Professional debut! Proud AMDA LA alumni: BFA. Much love to my family, friends, teachers, and Take 3 Talent! Regional: *Spring Awakening* (Moritz), *In The Heights* (Benny). "I will carve my own path for myself." @gabrielnunag

MAKENA JACKSON (*Alana Beck*) is a New York City based performer, making her National Tour debut in *Dear Evan Hansen*! TV: "Up Here" (Hulu). Makena would like to thank her endless support system for always believing in her. @makenajacksonn

MICHAEL PEREZ (*Alternate Evan Hansen; u/s Connor Murphy*) is honored to join DEH! Film/TV: Amazon Prime's *Uncle Frank*, Hallmark's *To Her With Love*, Netflix's "Insatiable," AMC's "Halt and Catch Fire," Sundance "When the Streetlights Go On." Thanks to his family, Stewart Talent, Rikki Dale Management, and Appa. @mikey_prez

MONICA BLUME (*u/s Heidi Hansen, Cynthia Murphy, Alana Beck; Dance Captain*). Some favorite credits include: *Cirque Musica Holiday Wonderland* (National Tour), *Beautiful* (Weathervane Theatre), *Kinky Boots* (Fulton Theatre/Maine State Music Theatre), "Blue Bloods" (CBS). Many thanks to Nicole at MMV. All my love to Justin. For my cousin, Matthew. #youwillbefound

JULIANNA BRAGA (*u/s Alana Beck, Zoe Murphy*) is thrilled to be joining *Dear Evan Hansen* for her National Tour debut! Montclair State BFA Musical Theatre '24 graduate. Recent credits include *Seussical* (Gertrude McFuzz) and *Into the Woods* (Rapunzel). Thanks to my loved ones & teachers for everything. @juliannabragad

BLAKE EHRLICHMAN (*u/s Evan Hansen, Connor Murphy, Jared Kleinman*) is ecstatic to be making his national tour debut! A graduate of Marymount Manhattan College. Huge thanks to the entire DEH team! Love to Mom, Dad, Brandon, family and friends — for always believing. @blakejehrichman

DALE OBERMARK (*u/s Larry Murphy*) is excited to make his national tour debut! You can find out more about him by visiting his website, www.daleobermark.com, or by looking him up on Instagram @daleobie73. He sends big love to Caitlin!

STEVEN LEVENSON (*Book*). Steven is a Tony Award-winning playwright, screenwriter, and television writer and producer. His plays include *If I Forget*, *Core Values*, *Seven Minutes In Heaven*, and *The Language of Trees*. He wrote the book for the musical, *Dear Evan Hansen*, which won six Tony Awards, including Best Book and Best Musical, as well

WHO'S WHO IN THE CAST

as the Olivier Award for Best New Musical.

BENJ PASEK & JUSTIN PAUL (*Music & Lyrics*). Oscar, Grammy, and Tony Award-winning songwriters/producers Benj Pasek & Justin Paul are best known for their work on *La La Land*, *The Greatest Showman* and *Dear Evan Hansen*. Other recent credits include "Only Murders in the Building;" *Spirited*; *Lyle, Lyle Crocodile*; *Aladdin*; *Trolls*; "Harlem;" "Dear Edward;" "Smash;" "The Flash;" and *Pink: All I Know So Far*. Previous theatre credits include *Dogfight*, *A Christmas Story*, *James and the Giant Peach*, and *Edges*.

MICHAEL GREIF (*Original Director*). Five-time Tony nominated director with three new musicals this season on Broadway: *Days of Wine and Roses*, *The Notebook* and *Hell's Kitchen*. Broadway: *Rent*, *Next to Normal*, *Grey Gardens*, *Dear Evan Hansen*, *If/Then*, *War Paint*. Other: *Make Believe* (Second Stage); *Our Lady of Kibeho* and *Angels in America* (NY's Signature Theatre); *The Low Road*, *Machinal*, *Dogeaters*, *Romeo and Juliet* (The Public).

DANNY MEFFORD (*Original Choreographer*) has choreographed three Tony Award winning Best Musicals: *Kimberly Akimbo*, *DEH*, *Fun Home*. Directing: *Shrek* (national tour); *25th Annual Spelling Bee* (Kennedy Center); *Becoming Liv Ullman* (NY Fringe); *The Gorgeous Nothings*, *The Fitzgeralds of St. Paul* (upcoming projects). Off-Broadway highlights: *Love's Labour's Lost* (Drama Desk nomination, Best Choreography), *Miss You Like Hell*, *February House*, *Much Ado About Nothing*, *Good Person of Szechwan*. International: *The Sound of Music* (tour). TV: "Rise," "Dickinson," "Fleischman Is in Trouble." MFA in Acting from Brown University/Trinity Rep.

ALEX LACAMOIRE (*Music Supervisor/Orchestrator*) has won 4 Grammys, 3 Tonys, and an Emmy for his work on *Dear Evan Hansen*, *Hamilton*, *In the Heights* and FX's "Fosse/Verdon." Music director, arranger and/or orchestrator credits include: Broadway revival of *Sweeney Todd*, *Message in a Bottle*, *9 to 5*, *Legally Blonde*, and *Wicked*. Film/TV credits include: Netflix's *Vivo* (composer), *In the Heights*, and *Tick, Tick... Boom!* (Executive

Music Producer).

DANNY SHARRON (*Direction Restager*). He/him. Danny is a director of new plays and musicals, committed to creating work by and about the LGBTQ+ community. He is currently the US Associate Director for the Broadway revival of *Cabaret*, and previously oversaw four companies of *Dear Evan Hansen* (Broadway/London/Toronto/1st Nat'l Tour) as the show's Senior Associate Director. NYC-based. Proud SDC member. Full credits: dannysharron.com

BEN COHN (*Associate Music Supervisor*). Broadway: Music Director for *Death Becomes Her* (upcoming), *Dear Evan Hansen*, *Once Upon A One More Time*. Assistant Conductor for *Wicked*. Music Director for Clay Aiken and Stephanie J. Block. Conducted *Sunset Boulevard* and *Tick, Tick... Boom!* at the Kennedy Center. Ithaca and NYU Grad. Lives In NYC with his husband and son.

MARK MYARS (*Direction/Choreography Restager*). Broadway Resident Director/Choreographer: *Death Becomes Her*. Broadway Associate Choreographer: *Dear Evan Hansen* (National Tour, London), *The Cher Show*, *My Fair Lady* (National Tour, London), *SpongeBob Squarepants*, *War Paint*, *If/Then* (National Tour). International Dance Supervisor: *Wicked* (National Tour, Chicago, London, Japan, Germany, Australia). Film/TV Associate Choreographer: *Isn't It Romantic*, "Schmigadoon". Mark is a Guest Musical Theater Teacher and teaches Master Classes nationwide. www.markmyars.com

DAVID KORINS (*Scenic Design*). Broadway: *The Who's Tommy*, *Here Lies Love* (Tony nom), *Hamilton* (Tony nom), *Beetlejuice* (Tony nom), *Dear Evan Hansen*, *Just For Us*, *Mrs. Doubtfire*, *War Paint* (Tony nom), *Bandstand*, *Misery*, *The Great Society*, *Motown the Musical*, *Vanya and Sonia and Masha and Spike*, *Annie*, *Bring It On*, *Godspell* and *Passing Strange*. Television: "Grease: Live!" (Emmy Award), 91st and 94th Academy Awards (Emmy nom).

PETER NIGRINI (*Projection Design*) is one of Broadway's pioneering projection designers. His work includes *Hell's Kitchen*, *The Who's Tommy*, *Here Lies Love*, *MJ*, *Ain't Too Proud*, *Beetlejuice*, *Dear Evan Hansen*,

WHO'S WHO IN THE COMPANY

The SpongeBob Musical, *A Doll's House Part 2* and *Fela!*. In other venues and forms including *Ground* (Public Theater), *Lucia de Lammermoor* and *Don Giovanni* (Santa Fe Opera), The Grace Jones Hurricane Tour, and *Deep Blue Sea* for Bill T. Jones/Arnie Zane Dance.

EMILY REBHOLZ (*Costume Design*). Broadway: *Gutenberg! The Musical!*; *Jagged Little Pill* (Tony Award nomination); *Frankie and Johnny in the Clair de Lune*; *Getting the Band Back Together*; *Indecent*; *Oh, Hello on Broadway*; *If/Then*; *Vanya and Sonia and Masha and Spike*; *Bloody Bloody Andrew Jackson*. Off-Broadway: Lincoln Center, Roundabout, NYTW, Public Theater, LAByrnth Theatre Company, Playwrights Horizons, Second Stage, NY City Center, among others. Opera: The Santa Fe Opera House and Opera Theater St. Louis. MFA: Yale

JAPHY WEIDEMAN (*Lighting Design*). 20 Broadway shows: *The Heart of Rock n Roll*, *SHUCKED!*, *The Piano Lesson*, *Summer 1976*, *Dear Evan Hansen*, *The Visit*, *The Nance*, *Of Mice and Men*, *Airline Highway*, *Lobby Hero*, *Bright Star*, *Charlie and the Chocolate Factory*. West End: *Dear Evan Hansen* (Noel Coward), *A Nice Fish* (Harold Pinter Theatre), and *Blackbird* (Albery Theatre). Production and Lighting Designer for Liz Phair's *Exile in Guyville* national tour, and for Hasan Minhaj's *The King's Jester* at Radio City and National Tour. 5 Tony Nominations for Lighting Design.

NEVIN STEINBERG (*Sound Design*). Broadway: *The Notebook*, *Sweeney Todd* 2023 Revival (Tony Award), *TINA — The Tina Turner Musical* (Tony nomination), *Hadestown* (Tony Award), *Hamilton*, *Dear Evan Hansen*, *Freestyle Love Supreme*, *The Cher Show*, *Bandstand*, *Bright Star*, *It Shoulda Been You*, *Mothers and Sons*, *Rodgers+Hammerstein's Cinderella* (Tony nomination), *The Performers*. Over thirty other Broadway productions with Acme Sound Partners and five additional Tony nominations: *The Gershwins' Porgy and Bess*, *Bengal Tiger at the Baghdad Zoo*, *Fences*, *Hair*, *In the Heights*.

MURNANE CASTING (*Casting*) is a first-class office in New York City specializing in casting theatre, film, and television projects nationwide. We focus on developing new

works and collaborating with emerging creators. Our mission is to curate exceptional ensembles of artists in a relaxed and imaginative casting environment. Learn more at MurnaneCasting.com.

KELSEY VENTER (*Assistant Director/Assistant Choreographer*). Venter was a member of the First National Tour of *Dear Evan Hansen*, serving as the tour's Dance Captain and as the cover for Heidi Hansen and Cynthia Murphy. As a performer, she has worked at theaters across the country including the Old Globe, the American Conservatory Theater, Guthrie Theatre and the Kennedy Center. Venter earned her BA in Theater from SDSU and her MFA from the American Conservatory Theater. kelseyventer.com

TALITHA FEHR (*Music Coordinator*) has worked on over 75 national and international productions and tours since 2005. Highlights include: *Sister Act*, *Mamma Mia!*, *School of Rock*, *Come Fly Away*, *Phantom of the Opera*, *Love Never Dies*, and *Priscilla Queen of the Desert* as well as the 2010 Olympic Ceremonies in Vancouver. She dedicates her work on *Dear Evan Hansen* to the memory of her mentor, Sam Lutfiyya.

RANDY COHEN (*Keyboard Programmer*). Cohen Keyboards has programmed or provided keyboard tech services for over 100 Broadway shows including *Hamilton*, *Book of Mormon*, *Dear Evan Hansen*, *In the Heights*, and *Kinky Boots*. TV: "Sesame Street," "Electric Company." Thanks to Sam, Tim, and Nick.

MICHAEL HOPEWELL (*Music Director*). Off-Broadway: *Once We Lived Here* (US Premiere); Tours: *My Fair Lady*, *The Phantom of the Opera*, *White Christmas*, *Dirty Dancing*. Regional: Tuacahn Amphitheater, John W. Engeman Theater, Gateway Playhouse; Recordings: Stage Stars Records (*Urinetown*, *The Wizard of Oz*, *How To Succeed...*). Love to my family. Endless thanks to Ben, Talitha, and DAR. For Mom, who taught me how.

ANNA KLEVIT (*Production Stage Manager*) is elated to be part of *Dear Evan Hansen!* National Tours: *Annie*, *My Fair Lady*, *Rudolph*. Selected regional credits: *What We Talk About...* (Old Globe); *Into the Woods*, *Matilda*, *Fireflies*, (South Coast Repertory); *Memphis*, *Once on This Island* (Moonlight

WHO'S WHO IN THE COMPANY

Amphitheatre). This one's for Mom and Dad.

KATY GENTRY (*Assistant Stage Manager*). National tours: *Annie*. Selected regional credits: *Theater of the Mind*; *Rattlesnake Kate*; *Quixote Nuevo* (Denver Center); *Sound of Music*, *Sweeney Todd* (Asolo Rep); *Tiger Style* (Olney Theatre Center). Katy holds a BFA from the University of Central Florida.

AARON MARTIN (*Company Manager*) is from Birmingham, AL, and excited to be on the *DEH* team! National Tours (ACM): *Annie*, *Anastasia*. Regional: Maine State Music Theatre (ACM); Florida Repertory Theatre (CM); Berkshire Theatre Group, Weston Playhouse (Intern). Thanks to the Crossroads Team, Katy, Anna, and Patrick. Love to family and friends.

LINDSAY KAPLAN (*Assistant Company Manager*) is thrilled to be on the road with *DEH*! Previous tour: *CATS*! Lindsay is a recent graduate from The Theater School at DePaul University. She would like to thank friends and family for always supporting her! IG @lindsaykaplan

GREGG DAMANTI (*Production Manager*). A 24-year theater veteran, Gregg started as a Production Stage Manager for Busch Entertainment, and later became the Production Manager for *Blue Man Group* in NYC. National tour credits include the first national of *On Your Feet!*, *CATS*, the first national of Lincoln Center's *My Fair Lady*, *Pretty Woman*, and now *Dear Evan Hansen*. "Thank you to Jen and Ripley who I miss dearly while on the road, and love coming home to them both."

ANDREW TERLIZZI (*General Manager*) comes to Crossroads Live after a 17-year touring career, 10 of which were with TROIKA Entertainment. Current GM credits: *Dear Evan Hansen*, *Pretty Woman: The Musical*. Select other credits: Jimmy Buffett's *Escape to Margaritaville*, *Bodyguard the Musical*, and *Priscilla Queen of the Desert*. He holds a B.F.A. from the University of North Carolina School of the Arts.

THE BOOKING GROUP (*Tour Direction*) has represented 28 Tony Award® winning Best Musicals and Plays. Current tours include *The Book of Mormon*, *Chicago*, *Come From Away*, *Dear Evan Hansen*, *Hadestown*, *Hamilton*, *Mamma Mia!*, *Mean Girls*, *MJ The Musical*,

Mrs. Doubtfire, *Parade*, *Pretty Woman*, *SIX*, *Some Like It Hot*, *TINA* — *The Tina Turner Musical*, and *The Wiz*.

BOND THEATRICAL (*Tour Marketing & Publicity*) is an independently-owned theatrical booking, marketing and publicity company representing award-winning Broadway shows and live entertainment properties. BOND connects artists and audiences by forming strategic, authentic and profitable partnerships between producers and presenters across North America. For a complete list of current projects, please visit BondTheatrical.com

NEURO TOUR (*Physical Therapy*). Carolyn Lawson PT, founder and CEO of NEURO TOUR & Neurosport (Physical Therapy), Global leaders in entertainment and performing arts medicine. We are honored to be part of this amazing touring company *Dear Evan Hansen*. NEURO TOUR, Keeping performers happy, healthy & on stage.

MUSIC THEATRE INTERNATIONAL (MTI) is one of the world's leading theatrical licensing agencies, granting theatres from around the world the rights to perform the greatest selection of musicals from Broadway and beyond. Founded in 1952 by composer Frank Loesser and orchestrator Don Walker, MTI is a driving force in advancing musical theatre as a vibrant and engaging art form. MTI works directly with the composers, lyricists and book writers of these musicals to provide official scripts, musical materials and dynamic theatrical resources to over 70,000 professional, community and school theatres in the US and in over 60 countries worldwide. MTI is particularly dedicated to educational theatre and has created special collections to meet the needs of various types of performers and audiences. MTI's Broadway Junior™ shows are 30- and 60-minute musicals for performance by elementary and middle school-aged performers, while MTI's School Editions are musicals annotated for performance by high school students. MTI maintains its global headquarters in New York City with additional offices in London (MTI Europe) and Melbourne (MTI Australasia).

JAYNA NEAGLE (*Executive Producer*). For Cirque du Soleil: *'Twas the Night Before*, *Paramour* (Broadway, Hamburg); *The Wiz* (NBC production). For BASE Entertainment: *Arrabal* (Buenos Aires, Toronto), *Jersey Boys*

WHO'S WHO IN THE COMPANY

(Johannesburg, Asian tour), *Priscilla Queen of the Desert* (São Paulo), *The Lion King* (Singapore), Jerry Mitchell's *Peepshow* (Las Vegas), *Wayne Brady: Making Sh@ Up* (Las Vegas).

CROSSROADS LIVE (*Producer & Tour Management*) brings together some of the world's top producers of live entertainment, now all under one banner. With offices in London, New York, Washington, D.C., Sydney, and Melbourne—our global platform ensures the best-loved titles from Broadway and the West End can be embraced by audiences around the world. Crossroads Live North America, under the leadership of Angela Rowles, is an innovative, full-service theatrical production company delivering the Broadway experience to audiences in North America and beyond. Our 2024-2025 Season: *Annie*; *Dear Evan Hansen*; *Dr. Seuss' How The Grinch Stole Christmas! The Musical*; *Pretty Woman*; *The Phantom of the Opera* (Asia); *TINA* — *The Tina Turner Musical*.

STAFF FOR DEAR EVAN HANSEN

FOR CROSSROADS LIVE NORTH AMERICA EXECUTIVE PRODUCER

Jayna Neagle

GENERAL MANAGER

Andrew Terlizzi

PRODUCTION MANAGER

Gregg Damanti

Assistant Production Manager..... Suzayn MacKenzie-Roy

COMPANY MANAGER

Aaron Martin

Assistant Company Manager..... Lindsay Kaplan

TOUR MARKETING & PUBLICITY

BOND THEATRICAL

bondtheatrical.com

DJ Martin Temah Higgins Mollie Mann

Marc Viscardi Wendy Roberts

Tony Joy Elisabeth Reyes

TOUR DIRECTION

THE BOOKING GROUP

Meredith Blair

Rich Rundle, Brian Brooks

Jonathan Pearson and Maryruth Grabez

thebookinggroup.com

CASTING

MURNANE CASTING

Chad Eric Murnane, CSA

Amber Snead, CSA

Nathaniel Riccio

PRODUCTION STAGE MANAGER.....Anna Klevit

Assistant Stage Manager.....Katy Gentry

Dance Captain.....Monica Blume

Associate Scenic Designer.....Richie Oulette & Javier Ameijeiras

Production Carpenter.....G.E. Simmons Falk

Costume Coordinator.....Hayley King

Hair & Makeup Coordinators.....Liz Printz, Nina Job

Assistant Costume Coordinator.....Daniella Pineda

Production Stitcher.....Aislinn Smith, Mia Mooney

Associate Lighting Designer.....Ken Willis

Moving Light Programmer.....Jeremy Goldenberg

Production Electrician.....Joel Bulthuis

Associate Sound Designer.....Mackenzie Ellis

Assitant Sound Designer.....Jamie Davis

Production Audio.....Alec Harris

Associate Projection Designer.....Kate Ducey

Projection/Video Programmer.....Sean Hooper

Video Animator.....Zoey Crow

Production Video.....Lorenzo Lagola, Jordan Brown,

Tristan Van Tine

Assistant Keyboard Programmer.....Sam Starobin, Tim Crook,

Nick Schenkel

Guitar Programmer.....Dillon Kondor

Virtual Voices Produced by.....Todd Hart/Vegas Voices

Virtual Voices Mixed by.....Ian Kagey

Production Assistant.....Alex Magallanes

HEAD CARPENTER.....Shane Lowry

Flyman.....Matthew Lamers

Deck Carpenter.....Alyssa Cargill

Head Props.....Ani Inman

Head Electrician.....Chandler Gray

Assistant Electrician - Video.....Jake Gomez

Assistant Electrician - FOH.....Aaron Kurland

Head Audio.....Mitchel Rieth

Assistant Audio.....Meg Schelling

Wardrobe Supervisor.....Melina Hernandez

Crew Swing.....Andi Voigt

Physical Therapy Company...NEURO TOUR Physical Therapy, Inc.

Insurance.....EPIC Insurance Brokers

Social Media.....Think Tank Marketing

Social Media Captains.....Jenna Kantor, Jessie Tossey

Tour Marketing & Publicity Office.....BOND Theatrical/

Nilesha Alexander, Jenny Bates, Kolten Bell, Melissa Cohen,

Jesse Daniels, Caroline Frawley, Ayana Jernigan, Steph Kelleher,

Deborah Mann, Harrison Mootoo, Scotland Newton, Laura Rizzo,

Madison St. Amour, Linda Stewart, Jacob Stuckelman

Production Photography.....Evan Zimmerman for MurphyMade

Merchandise Provider.....Creative Goods

Merchandise Manager.....Gena Byrd

CROSSROADS LIVE NORTH AMERICA

Chief Executive Officer.....Angela Rowles

Executive Producer.....Jayna Neagle

Executive Producer.....Kori Prior

Vice President of People Operations.....Charisse Fontes

Vice President of Finance.....Brian Jacob

Vice President of Marketing.....Michael Yuen-Killick

Senior General Manager.....Andrew Terlizzi

Director of Production.....Heather Chockley

Director of Booking and Engagements.....Tyler Soltis

Production Manager.....Gregg Damanti

General Manager.....Deana Marie Kirsch

Engagement Manager.....Barrett Newman

Warehouse Manager.....Coree Howard

Associate General Manager.....Melanie Cahill

Associate General Manager.....Emily Miu

Assistant Production Manager.....Suzayn MacKenzie-Roy

Assistant Production Manager.....Drew Neitzey

Production Accounting Manager.....Sheila Lewis

Production Accountant.....Travis Huebel

Staff Accountant.....Electra Walker

Executive Assistant to the CEO.....Alissa Klusky

Assistant Warehouse Manager.....Joshua Cookson

Learn more about Crossroads Live North America and our team:

www.xroadslive.com

CREDITS

Scenery by TTS Studios. Lighting equipment from PRG. Sound equipment by MASQUE. Video equipment by 4Wall. Rigging by Phoenix Lighting and Rigging. Rehearsal Studio: Pearl Studios, NYC. Trucking by JANCO. Touring Company Lobby Signage by Express Signs in Frederick, MD.

SPECIAL THANKS

Dear Evan Hansen rehearsed at Pearl Studios in New York, NY. Technical Rehearsals and Previews held at the Tobin Center in San Antonio, TX.

Dear Evan Hansen is proud to collaborate with:

Crisis Text Line. In crisis? Text HELLO to 741741 for free, 24/7 crisis support.

The Jed Foundation (JED), a nonprofit that exists to protect emotional health for our nation's teens and young adults. Jedfoundation.org

@DearEvanHansen
www.dehtour.com



Backstage Employees are represented by the International Alliance of Theatrical Stage Employees (or I.A.T.S.E.).



The Director and Choreographer are members of the **STAGE DIRECTORS AND CHOREOGRAPHERS SOCIETY**, a national theatrical labor union.



United Scenic Artists • Local USA 829
of the I.A.T.S.E. represents
the **Designers & Scenic Artists**
for the American Theatre

WARNING

The photographing or sound recording of any performance or the possession of any device for such photographing or sound recording inside this theatre, without the written permission of the management, is prohibited by law. Violators may be punished by ejection and violations may render the offender liable for money damages.



Life is complicated



Be advised

midlandmilawyers.com

Appellate Law | Nonprofit Organizations
Business Law | Real Estate Law
Civil Litigation | Landlord Tenant Relationships
Estate Planning | Probate and Trust Administrations
Family Law | Elder Law and Medicaid Planning
Municipal Law | Patents, Trademarks, and Copyrights



143 MCDONALD STREET | MIDLAND MI | 48640 | 989 832 1770

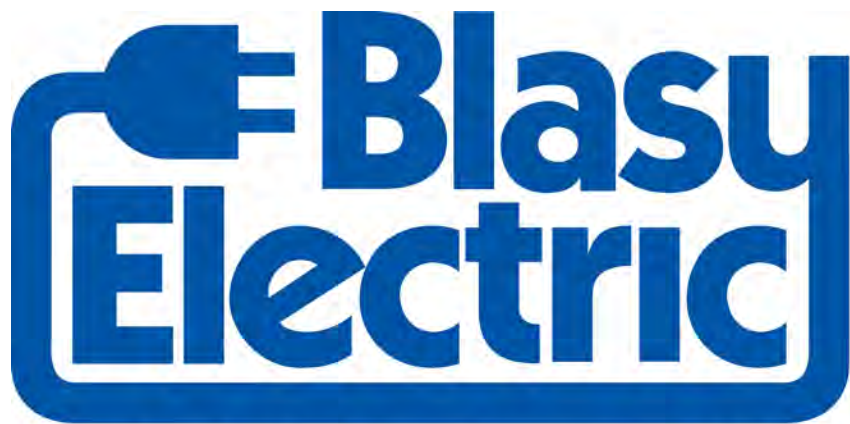
NORTHTOWN COLLISION

Complete Auto Body Repair
ICAR and State Certified Technicians | Insurance Preferred Facility



989.835.5668

www.norhtown-collision.com | 4394 N. Eastman Rd., Midland | Charles Owens, Owner



Professional Team. Personal Service.

1012 JEFFERSON AVENUE | MIDLAND, MI 48640

989.631.6252 | BLASYELECTRIC.COM



Estate Planning for Peace of Mind

Caring. Community-focused.
Counsel you can trust.

Specializing in all facets of estate and estate tax law, including wills, trusts and charitable planning, Attorney Todd Gambrell will help carefully tailor an estate plan to meet your family's unique needs and goals.

Schedule a consultation:
todd@gambrelllaw.com
or 989.631.7626

gambrelllaw.com



Gambrell
and ASSOCIATES PLC

Todd Gambrell, Attorney at Law
1605 Ashman Street • Midland, MI 48640

BROADWAY & BEYOND SERIES



Wealth
Enhancement®
The Gavin Team

CELEBRATING
30
YEARS

STOP
MAY 10-11

WINDOWS
ON OUR
WORLD



The Dr. Andrea Loulee
Jenkins Endowed Fund for
Cultural Enrichment

STEP
AFRIKA!

APR 25

ARBURY
INSURANCE AGENCY
A HUB International Company

iLuminate
THE TOUR

APR 30



Capital Power | MCV



RAIN

A TRIBUTE TO THE BEATLES

MAY 8

midlandcenter.org / 989.631.8250

MIDLAND
CENTER
FOR THE
ARTS

LEGACY SOCIETY

Carole Adams
 H. Floyd Andrick
 Ralph & Kristina Brozzo
 Veronica Cermak*
 Henry E. & Kathryn G. Gray*
 Robert and Pam Hart
 Michael & Debra Hayes
 Paul E. Hayes & Michael J. Mirto
 William C. Krueger
 Dr. George & Sue Lane*
 John Ludington*
 Dr. Frederick & Elaine Miller*
 Patricia Naegele*
 David & Cady Ramaker
 Joseph E.* & Joan H. Rogers
 J. Donald & Angela Sheets
 James & Bette Tollar*
 Lisa & Howard Ungerleider
 Daniel & Cathryn White
 Pat & John Zimmerman

*INDICATE DONORS WHO HAVE PASSED AWAY.

SPECIAL THANKS TO OUR LEGACY SOCIETY MEMBERS

The Legacy Society honors those donors who have generously expressed their commitment to charitable giving by naming Midland Center for the Arts as a beneficiary of a planned gift.

For more information on how you can support the Center with a planned gift, please contact Stephanie Kirkpatrick at kirkpatrick@midlandcenter.org

FEATURED COVER



Hand Fan From the History Archives of Midland Center for the Arts

This expanding cardboard hand fan is from the A.H. Bradley Funeral Home, c. 1913. The left panel is a young man playing a guitar, the center panel is a young lady with a corset, and the right panel is a bird in a cage. The inscription on the back of the fan reads "A. H. BRADLEY, MIDLAND, MICHIGAN," while the front inscription reads "Jan 3 19" with the rest of the year missing. Cardboard hand fans were a common and

popular item starting around 1920; with an artistic and calming motif on one side, attendees could use the fan to help keep cool when wearing warm funeral attire, while the opposite side of the fan provided advertising for the funeral home.

THE MIDLAND COUNTY HISTORICAL SOCIETY HISTORY & ARCHIVES COLLECTION

The mission of the **Midland County Historical Society** is to preserve the archival history and material culture of Midland County. The Archive serves to support research, interpretation, and exhibition of Midland County history and how it relates to local, regional, state, national, and international history through preserving the historical records of organizations, people, places, and events. **Learn more** about the Midland County Historical Society, upcoming events, the online archive, and membership a midlandcenter.org/mchs.

Crystal Laudeman has worked at Midland Center for the Arts with the Midland County Historical Society since 2007, starting as a Museum Monitor providing tours of the Historic Bradley House Museum at Heritage Park. Since 2013, Crystal has been able to focus on her passion and interest in the Archives, improving the care, preservation, and accessibility of the MCHS Archives and Collections and supporting the mission to preserve and share the history of Midland County for the benefit of the community. In 2016, Crystal created the MCHS Online Archive, which provides a new way for the community to engage with and learn more about the history of Midland County. Her greatest interest in the Archive is the extensive documentation related to Women's organizations and history in Midland. Crystal continues to seek additions to grow the Archive and History Collections in meaningful ways.

MAKE A GIFT TODAY

Contributions to Midland Center for the Arts
MAKE AN IMPACT!

CIRCLE OF FRIENDS DONORS

Provide art & science education opportunities for participants of all ages

Offer arts & cultural activities to prepare young people for a brighter future

Offer multi-cultural programming, helping create a global community in the region

Help families make lifelong memories

Keep ticket prices affordable

Donating online is easy at
midlandcenter.org/donate

YES! I WANT TO BE A PART OF THE CIRCLE OF FRIENDS

Name(s) *(as it should appear in recognition lists)*

Address

City

State

ZIP

Phone

Email *(to receive exclusive offers make sure we have an updated email address)*

- ☐ My gift is in honor or memory of _____
- ☐ I would like to remain anonymous
- ☐ Matching Gift - I am affiliated with _____

My company's matching gift form is enclosed.

DONOR LEVELS:

\$20,000+	\$1,000 - \$2,499
\$10,000-\$19,999	\$500 - \$999
\$5,000 - \$9,999	\$100 - \$499
\$2,500 - \$4,999	

CIRCLE OF FRIENDS

THANK YOU! YOUR DONATION MAKES AN IMPACT!

Midland Center for the Arts appreciates our **CIRCLE OF FRIENDS!** Each & every gift helps bring arts & culture to the Great Lakes Bay Region by supporting the MATRIX:MIDLAND, symphony, theater, choral, museums, education & all programs at the Center. **THANK YOU!**

CIRCLE OF FRIENDS donor levels are based on donations made between January 1, 2024 - January 15, 2025.

Italicized names are those in whose honor or memory the donor's gift was made.

Platinum+ \$20,000+

Peter and Barbara Carras
David and Patti Kepler
Lisa and Howard Ungerleider

Platinum \$10,000 - \$19,999

James and Mary Ann Anschutz
Ward and Rebecca Bentley
James R. and Anita Horne Jenkins
Robert and Sheryl Lane
Sarah and Daniel Opperman
Ken and Gina Pederson
Jean Popoff
Jack and Jane Robinson
Amy and John Wilson

Diamond \$5,000 - \$9,999

Carole Adams
Barbara Sovereign
Katherine Boothroyd
Ralph and Kris Brozzo
David and Marilyn Camp
Patricia Clark
Sarah Dergazarian
Anne and Mark Flegenheimer
Joanne and Barry George
Michael and Claudia Goad
Robert and Pam Hart
Marcia Haywood
Leslie and James Jenkins II
Robert & Sheryl Lane
Robert & Michael Malecki
Alan Williams and Sue McKinley
Bruce and Roberta Oliver
Jack Pinney, M.D. and Lydia Watson, M.D.
David and Patty Rapanos
Thomas and Holly Valent
Tina S. Van Dam
Carol and David Williams

Ruby \$2,500 - \$4,999

Gene Anderson
Laura and Andy Ault
James Bain Jr.
Barbara Barnes and Bill Krueger
Brooke and Adam Beebe
Larissa and Rui Cruz
Junia Doan
Jeanne Dodd
Fran and Jim Falender
William and Kathy Fothergill
Dan and Diane Gavin
Michael and Debra Hayes
Randall and Joy Hayes
Tammy Hayhoe
Linda Hutchison
Paula A. Jonas
S. Preston Jones
Dr. Betty Jones
Dave and Lisa Johnston
Roger and Liz Kapla
Kevin and Stephani Kolevar
Brendy and Anne Lange
Jon Loos
Ted and Kay Lunt
David Midkiff and Allison Beatty
Sylvia Patchin
Stephen Patchin
Andy and Donna Rapp
Richard and Janice Reynolds
Joan Rogers
John and Cheryl Rosten
Carolyn and Stanford Rowe
Beth and Bill Schmidt
Lee and H. J. Smith
Art and Joy Sponseller
Nancy D. Stark
Ken and Christine Van Heel
David and Carol Weaver
Neal and Allison Wilcox
John and Pat Zimmerman

Gold \$1,000 - \$2,499

Brian and Lissa Ames
Peter and Catherine Anders
Gregory and Shari Armstead
Margaret and Lawrence Ault
Brad and Michelle Bahr
Nancy and Bill Barker
Sandy and John Bartos
Jeff and Karen Beckwith
Christina Behring, DDS, PLLC
Bradley Bidwell and Kyle Gordon-Bidwell
Aimee and Jonathan Brandt
Alan Burmester
Joan Chapman
Stuart and Mary Choate
Kathleen and Alan Conley
Michael and Nina Cronenberger
Beverly Currutt
Janet and Nicholas Darby
Catherine Doan
Ruth Alden Doan
Laura and Raymond Ensell
Carolyn Epplert
Michael and Lois Felder
Richard and Christine Ferrando
Dr. Arthur and Judith Frock
David and Nina Frurip
Sandra and Mike Gaken
John Goddard and Cheryl Wrone-Goddard
Calvin and Marilyn Goeders
Andrew and Paige Gray
Roy Green
Jerry and Marcia Hahnfeld
James and Anna Hemeyer
Robert and Joyce Hetzler
Bob Hobohm and Kathie Fuce-Hobohm
David and Sarah Hocking
D. Bryan Jao
Steve and Mary Rita Johnson
Lee and Bonita Johnston
Phil and Sharon Kalina
Phyllis Kaya
Katherine Keefer
Lee Ann Keller and Tamara McGovern
John and Linda Kennan
Suzanne Krevinghaus
Sue LaBear
Jim LaBear
Drs Thomas Lane and Gail Hoffman
Benjamin and Kristin Langrill
Robert Lee
Frank Leimbek and Marjorie Teal
Tom and Jan LeVasseur
Wilmer and Sonya Lidke
Chris and Jackie Light
Honorable Thomas and Tina Ludington
Dorothy and Mark Marinar
Angela Mathews and Jeff Pribble
Judith McDowell
Shirley McKenney
Barb and Robert McMillan
Doris and Brian McNeill
Ellen McVey
Dr. Scott and Michelle Mertes
Anne Messinger
Richard and Susan Metcalf
Jennifer Moeller
Robert E and Dorothy G Monica
Charitable Fund
Dr. Karen and Mr Mike Moore
Alice H. Morgan
Rob and Sharon Mortensen
Julie and Patrick Murtha
Martin and Kay Musolf
Bob and Joy Mussell
Helen Myers
Mary M Neely
David and Elizabeth Neithamer
Kara Nic and Nate Bussiere
Ruth Ann Ostrowski
and Richard A. Votaw
Jon and Sharon Panepucci
Tracy and Steve Perry
Mike Rabideau
Joseph J. and Janice M. Rabideau
Alice Ann Ralston
Alex and Ashley Rapanos
Judith Ann Rapanos
John A Rapanos
Frank and Ellen Riggie
Todd and Julie Rivard
Carolee and Fred Rolf
David J. and Elizabeth Romenesko
David and Ann Rothman
Luke and Tonya Russell
Jennifer and Theodore Sajbel
Phil and Carol Sarnacke
Donald Liles and Patricia Scaduto
William and Louise Scherer
Jennifer and Shawn Seidel
Gordon Siu
Jessica and Nathan Snyder

Tara and Randy Sosolik
Eric and Devon Stangland
Carol Staples and Sam Choo
Derrell and Sue Steffen
Carole Steffens
John Stoneback
Amy and Gary Strickler
Andres and Jennifer Suarez
Andreas and Tracy Teich
Nichole and Aaron Toth
Duane and Terry Townley
Jill Van Dalen and Kevin McCusker
Jacqueline and Wilhelmus Verhoeven
David and Cynthia Vickery
Peter and Loretta Waters
Sandra Westphal
Greg and Elaine White
Jo Winchester
David and Jane Wirth
Ann and Steven Woodford
William and Karen Wuerfel

Silver \$500 - \$999

Belinda Adamson
Robert Arnold
Andrew and Julie Arthur
Jim and Char Bakeman
Linda Bakke
Robert and Johanne Balwinski
Scott Boetefuer
Tracy and Larry Brown
Brenda and Dennis Buckler
Jim May and Ann Butzler
Leonard and Renae Clevenger
Daniel and Amanda Confer
Don and Sheron Delbert
Wendell and Marcia Dilling
Catherine J. Dixon
Chris and Mike Dizer
Norm and Maureen Donker
Marjorie Dwane
Eldon and Judith Enger
Craig and Kathy Flickinger
Randall Frank and Margueritte Kuhn
Kevin and Lyn Frazier
Lou Garl
Tracy Ghosh
Jan Glomski
Ron Glomski
Virginia Gohrband
Howard and Nancy Graves
Dr. Ieva Hartwell
Patrick and Julia Heider
Clarissa Heil
Jacqueline Henninger
Bill Henninger
Patricia J. Horne-Mcgee
Leon and Joann Jay
Anne Kelly-Rowley & Jerry Rowley
George and Linda Killat
Steve Kin
Charles Koella
Richard and Judith Krauss
Rayana Larson
Charlotte B. Maxson
James McIntyre
Matthew Metcalf
Drew and Alyssa Moomey
Jim and Jan Morrone
Guy and Stephanie Moulthrop
Barry and Beverly Moyer
Robert and Tawny Nelb
Ed and Indira Oskvarek
David and Christine Parrillo
Adam and Jill Paveglio
Rob and Deborah Reeves
Lynn and Maureen Schefsky
Gail and BJ Schwartz

Carol and Gary Shafer
Jill and Steve Sklenar
David and Carol Skolnik
Craig and Helen Sonke
Earl and Marilyn Soules
David R. Speth
Dr. Michele Stockton
M.L. Stout
Fred and Kathlene Stout
Chris and Sue Streeter
Michael and Catherine Strong
Caro Veterinary Clinic
Alice Sharron Such
Dave and Ruth Sutton
Katrin Thorson, REALTOR®-Ayre/Rhinehart
Philip and Sharon Tower
Cheryl Van Houten and Randall Tomke
Paul and Suzanne VanSickle
George and Judy Vogel
Grant and Robin Von Wald
Lindsay and Peter Voorheis
Marilyn Wildes
Megan and Joe Yezak
David and Laura Young
Patricia C. Young and Ronald A. Wellman

Bronze \$100 - \$499

Deborah Adams
David and Jeanne Aden
Frank and Gretchen Aerstin
Lisa and Dave Albers
David and Catherine Alexander
Thomas and Sudie Ammerman
Floyd Andrick
Anonymous
Bob and Sue Johns
Denise and Tom Anthony
Betty L. Apple
Jim and Judy Baird
David and Susan Bakke
Roger and Candy Balis
Andrew Barclay and Nicole Schram
Melissa Barnard and Rick White
Charles and Margaret Bash
Joan and Ivor Bateman
Richard and Cheryl Bates
Raymond Baur
Rose Beasley
Marilyn Bechtel
Elizabeth Benefield
Jeffrey A. and Laura L. Bennett
Kim Bennett
Mike and Kristen Bennett
Paula Bennett
Connie Berg
Joan Billingsley
Karrie Bixler
Margaret A. Blaser
Lisa and Steve Bott
Shiela and Chris Bowman
Clyde Boyd and Patricia Foster
Jane Bradley
Francine Brandt
Thoralf and Karen Brecht
Bill and Barbara Brennan
Joann Bunce
Patricia Burton
Gary and Angela Buske
Melvin and Octavia Cabey
Linda Campbell
Janet Cappel
Erlene Carmody
Kathleen Carpenter

David and Kathy Carr
Douglas and Carole Catlin
Alan and Lisa Cave
Rebecca and John Chiodini
Rhonda Christian
Joslyn and Joshua Chulski
Janet L. Clark
Patrick Clark
Kimberly Clarke
Emily and Roger Clement
Peter Conarty
Thomas Coon
Pamela and Chris Coughlin
Rick and Deb Craig
Angelique E. Crely
Meki Craig
Kathleen Cripps
Carmen Crowell
Beth and James Cunningham
Grace Daines and Joseph Pastuzyn
Virginia Dall
Dianne Dalton
Stacy and Carol Daniels
Greg and Alexys Daut
Peter and Deb Deal
Jack Decker
Lark Decker
Teri DeClerck
Robert J. Dingwell
Anna Doering
John and Kathy Doering
Benjamin and Kelly Dollard
Sandy and Rick Doombos
Robert and Mary Ann Dostal
Gail and Craig Dryzga
David and Laura Dufurrena
Michael and Barbara DuRussel
Tori Duve
Mariana and Petar Dvornic
Dr. Pamela Ecarus
Christopher Edwards and Marianne Besaw
Cathryn and Eric Ekern
Zachary Evans and Michael Horace
Charles Fahlgren and Kay Harley
Ray and Cathy Faubert
Dennis and Faye Fear
Hilary Ferguson
Allan and Colleen Fitzgerald
Beth Ann Fitzpatrick
Kenneth and Lila Foor
Jill Freeland
Kurt Frevel
Kristin and John Gall
Juan and Linda Garces
Susan and David Gessford
Ivan Gestlada
Larry and Anne Giebelhaus
Mary Ann Gilbert
Peggy Gilstad
Glen Glawe
Charlie Goff
Ruby F. Gould
Julia and Gerald Gracik
Mary and Dan Graiver
Jan L. Gray
Carmen and Tom Gray
Barbara Grice
Wendy Gross
James and Judy Grzesiak
Kathie and Bill Grzesiak
Betty Guerriero
John and Lynne Gutowski
John and Susan Haas
Scott Haines and Barbara Yeo-Haines
Cathryn and Gregory Haines
Michael J. Hamas
Cliff Hamilton
Mary and Matthew Hamilton

CIRCLE OF FRIENDS

Eugene and Pamela Hardy
James and Linda Hargett
Jeremy Durham and Jenny Harley
Susan Harrigan
Thomas and Marjorie Haskell
Melissa and Jim Haswell
Mary Anne Hawkins
James and Nancy Heffel
Mary Jo Heisler
Ed and Ruth Helwig
Marvin and Barbara Henry
Tracey Henson and Ernesto Sanchez
Edward and Lisa Herron
Linda Hess
Susan L. Hillman
Carol Hoerneman-Plaush
James Hohmeyer and Susan Mercy
Karen Holbrook
Josh Young
Gloria Holm
Kristin Holsather
Alexander and Cecilia Horbal
Tom and Judy Howe
Richard and Pat Humburg
Jeff Hunt
Beth and Fritz Hyde
Julie Hynes
Judy Hysell
James and Carol Jaeger
Richard Jankowski
Nancy Janoch
Victoria J. Jendretzke
Stephen and Anne Jenkins
Greg Jensen
Gunnar and Marilyn Johanson
Robert and Janet Johnson
Linda and Paul Johnson
Randall and Kay Johnson
Carol Jozwiak
Terry Jozwiak
Richard Kalinowski
Bruce and Nadine Kanuch
Jennifer Kanyo and Christopher Gaynor
Robert and Loretta Keidel
Steven and Carol Keinath
Mrs. James Kendall
Paul and Doreen Keptner
Charles Kerr
Betty Kirkley
Janet Kline
Jerry and Linda Kline
Shan Pin Koh and Cheng Xia Jiang
Kevin Kontranowski
David Krawczyk
Dr. and Mrs. Danny Krebs
Ken Krueger
Ronald and Jane Lacher
Nancy and Mike Ladenburger
Martin and Marsha Langhorst
Gary and Janet Levandoski
L. G. Linabery
Annette and Steven Lucas
Mary Lueck
James Morgan
Robert Mai
Kristin Maloney and Christopher Conner
Maria Markey
Janet Martineau
June Matzke
Carolann and Dennis Maxwell
Marilyn Mazanec
Dona McArdle
Kelly McArdle
Melanie McCoy
Marvin and Carol McDonald
Gail and Lee McEmber
Anne McGeehan-Woodard
and John Woodard

Tim and Debra McGilsky
Susan McGirr
Edward and Cheryl McKee
Edward McKee
Linda and Keith McMackin
Diane McNally
Mark Menestrina
James and JoAnn Mentele
Judy and Peter Moehs
Tom and Gisela Moffit
Rita Mogg
Susan Montesi
Connie Moorhead
Michelle and Dan Morgenstern
Mary Ellen Moschetti
Anja Mueller
James and Donna Murphy
Ron and Ellen Myers
Dr. Jennifer and Mr. Michael Nash
Robert and Susan Nash
Randy Obermiller
Aloysius J. Oliver
James and Heidi O'Neil
Brian and Debra Ora
Ann Schumann-Ousley and Todd Ousley
Bob and Mary Owen
Jeffrey and Carolyn Pacholka
Erin Palmer
Beacher & Ruth Pearce
Donald Pearson
Bruce and Carol Peck
Douglas and Karin Pelletier
Stephanie H. Pereira
Debra and Ed Plotrowski
Christy and Bob Plishka
Mark Pollock
Lynn Pottenger and Jacques Randolet
Robert and Connie Pound
Deborah and Richard Poupard
Lisa and Dana Pressnall
Jeff and Gina Provenzano
Arthur and Crystal Prunier
Len and Diann Pytlak
Brenda Radabaugh
Nara and Larry Ramseyer
Ken and Anne Randall
Sally Raynak
Bill Reder
Kimberly and Brian Reisner
Pamela Render
Ricardo and Stephanie Resio
Barbara and John Rice
Nancy L. Richey
Michele Ringle
Al and Ann Roeseler
David and Tanya Ross
Timothy T. and Kimberly L. Royle
Brenda and James Rozek
Joe and Janet Roznowski
Walter and Joanne Rupprecht
Ashley Rychwa
Donna Rychwa
John Sarge
Patrick Savage
Sandra Schian-Miller
Andrew Schiefer
Thomas J. Schmitz
Matthew and Dana Schramm
Amy and Fred Schultz
Monika and Robert Sciba
Josefina Gonzalez-Rey
and Michael Sebal
Laura Seibert
Gregory J. Shaul
Shelby and Jordan Shawl
Laurie Shell
Judy L. Sierras
Tom and Sara Sikes

Jeri and Darryl Smith
Martha Smith
Sarah and Ryan Smith
Sharon Sny
Patricia Soehnel
Steff and Mark Spence
Mike and Susie Staloch
Michael and Cathryn Starch
Peg Stokes
Clifford and Lucia Storr
Laura Stowell
Barbara Stuart
Brad and Lara Sullivan
Elizabeth and Rusty Sullivan
Daniel and RuthAnn Swart
C. Chambers Szafranski and R. Szafranski
Margie Talbot
Connie Talford
Mrs. Beryl J. Tarrant
Gary and Debra Teachworth
Jeanne and John Telfer
Terry and Deb Temperly
James A. Tesner
Bruce and Rosemarie Thill
Mark Tolfree and Tony Lascari
Diane Tomczak
Paul and Luann Travis
Betty J. Ujevich
Paula S. Ulmer
John and Joyce Van Dalen
Charles and Bertha Vaughn
Chuck and Kitty Veaser
Enza Viges
Stephanie Warren
John and Sandra Watt
Alexander and Susan Weitz
Bonnie Westervelt
Harry and Renee White
Erin and Collin Whitfield
Reed and Linda Wicander
Steve and Cathy Wildes
Todd and Teri Williams
Carol Willis
Dave and Joan Winegardner
Andrew and Julie Wolf
John and Jan Wright
Ted and Sarah Yoder
Thomas Young
Lowell and Julia Youngquist
Yoshie Ziarno
Paula and Jim Zoller

THANK YOU to those who have established a named endowment at the Center:

James R. and Anita H. Jenkins
In memory of Dr. Andrea Louise Jenkins
Ken and Gina Pederson
Judy Phillips
David and Cady Ramaker
Dr. Daniel and Cathryn White
In memory of Carl and Ethel Mortenson

CIRCLE OF FRIENDS

ABOUT MIDLAND CENTER FOR THE ARTS

2024-2025 Board of Directors

President & CEO: **Dr. Matt Travis**

Chair: **Jenifer Acosta**

Vice-Chair: **Bradley Bidwell**

Treasurer: **David Jaffe**

Secretary: **Jessica Snyder**

Immediate Past Chair: **Mark Flegenheimer**

Members at Large: **Brooke Beebe, Stephen Carras, Maureen Donker, James Jenkins, Joy Yang Jiao, Pavel Konecny, David Midkiff, Ricardo Resio, Lisa Ungerleider, Lydia Watson**

Thank You To Our Foundation & Community Partners

DeShano Community Foundation

The Doan Family Foundation

The Alden & Vada Dow Family Foundations

Dow Company Foundation

The Herbert H and Grace A Dow Foundation

Rollin M Gerstacker Foundation

James R and Anita Horne Jenkins Family Foundation

The Patricia and David Kepler Foundation

Marvin C and Adele T Kubitz Memorial Endowment Fund

Michigan Arts & Cultural Council

Midland Area Community Foundation

National Endowment for the Arts

Paradise Foundation

Maxwell K Pribil Memorial Trust

Saginaw Arts and Enrichment Commission

Charles J Strosacker Foundation

The Harry A and Margaret D Towsley Foundation

ACCESSIBILITY

We offer many accessibility services to ensure your experience at Midland Center for the Arts is an enjoyable one.



/ Free Assistive Listening Devices upon request.



/ Wheelchair Seating and Other Seating Accommodations upon request at time of ticket purchase. Please note our theaters do not have elevators and most seats/rows require the use of stairs.



/ Convenient Drop-Off Areas near entrances.



/ Relaxed performances that support a welcoming environment to individuals with autism spectrum disorders (ASD), developmental disabilities, sensory processing disorders or PTSD; and for other sensory-sensitive people and their families. Please visit midlandcenter.org/sensoryfriendly for more information.

For questions about accessibility, or if you need assistance or an accommodation, please contact Guest Services at guestservices@midlandcenter.org or 989.631.8250.

GUEST AMENITIES

/ **Free Booster Seats** – We have a limited number available upon request. Personal booster seats are permitted in the theater.

/ **Food and Beverages** – Light snacks and beverages are available at concessions. Cash and credit are accepted. Lounge will be open one hour prior to curtain for most events.

/ **Local Attractions** – Visit downtown Midland just one mile away, featuring many great restaurants, shops and hotels. The Center shares a campus with the 100-acre Dow Gardens and Whiting Forest, featuring the longest canopy walk in the nation.



IMPORTANT INFORMATION FOR OUR PATRONS:

More and more, theatergoers are being exploited by unscrupulous ticket resellers. Oftentimes tickets are being marketed on secondary ticket sites before the operator of the site has

even purchased those tickets – and they are being sold at prices far above the price you will pay by purchasing your tickets directly through Midland Center for the Arts. Tickets obtained from unauthorized or third-party sources may be stolen, counterfeit or invalid to the performance. You also may not be able to get help from the Center's ticketing staff if you have a problem, as there will be no inhouse record of your transaction. Further, we cannot contact you if there is a change of performance time, traffic notices, or to provide other special information.

To avoid being ensnared by unscrupulous ticket resellers:

- Bookmark our website, www.midlandcenter.org, for ticket and show information.
- Never purchase tickets offered on third-party sources or social media that are often inflated in price or counterfeit.
- Sign up for our E-Club on our website to receive information directly from Midland Center for the Arts.

**midlandcenter.org is the only OFFICIAL ONLINE
TICKETING PROVIDER for events at Midland Center
for the Arts.**

Buy your tickets at midlandcenter.org; by phone at 989.631.8250; or in person at our Ticket Office.

If you think you may have been duped by a fraudulent ticket reseller, you can file a Consumer Complaint Form with the Michigan Attorney General's Office. Forms are located at <https://secure.ag.state.mi.us/complaints/consumer.aspx>

CENTER STAFF

EXECUTIVE OFFICE

DR. MATT TRAVIS
President & CEO

CORIE ROZNOWSKI
Executive Communications Coordinator

PAM KENT
Human Resources Assistant

MARKETING & COMMUNICATIONS

NICHOLE TOTH
Director of Data & Analytics

ALEX WOODY
Communications & Public Relations Manager

KELLY NELSON
Graphic Designer

ABIGAIL PROVENZANO
Marketing & Communications Coordinator

KYRA MACOMBER
Marketing Assistant

DEVELOPMENT

STEPHANIE KIRKPATRICK
Associate Director of Development

TAMMIE LEE
Development Project Manager

ZACH PROUT
Donor & Member Relations Specialist

PERFORMING ARTS PROGRAMMING

BRYAN JAO
Vice President of Performing Arts Programming

WILLIE E. JONES III
Manager of Produced Theatre & Theatre Education

AARON BORER
Programming Coordinator

ROBIN VON WALD
MSO Personnel Manager

EDUCATION

JENNIFER KANYO
Senior Director of Museums & Education

AMY POBANZ
Manager of Experiential Learning

LAUREN SEQUIN
Youth Programs Manager

LAUREN HONAMAN
Classes & Camps Coordinator

BETH NOVA
Fine Arts Program Supervisor

SUSAN KNOCH
Scheduling Specialist

SARAH FOERSTER
JACQUELINE WILLISIE
Lead Center Educators

MUSEUMS & HISTORICAL SOCIETY

JAKE HUSS
Curator of Historical Programs and Exhibitions

GINA SCHRECK
Visual Arts Curator

ADAM NIEMIEC
Exhibit Coordinator & Production Assistant

CRYSTAL LAUDEMAN
Archivist

OPERATIONS

ANNE SCHROEDER
IT Project Manager

LAUREN FLETCHER
Volunteer and Engagement Coordinator

GUEST SERVICES, TICKETING &

SALES

KRISTIN GALL
Ticket Office Manager

SHELBY SHAWL
Senior Assistant Ticket Office Manager

LAUREN BINDSCHATEL
Assistant Ticket Office Manager

AJA PHILPOT
Lead Guest Services Specialist

FRANCESCA FARZALO
MATTIMEO MCCRORY / BAILEY SMITH
JOSHUA HOGUE / NATALIE ARMSTRONG
KIERRE ANDERSON
Guest Services Specialists

FINANCE

KELLEY KRITZMAN
Chief Financial Officer

DANIEL MURAWSKI
Financial Analyst

BETHANY SMITH
Accounting Clerk

REBECCA KRAWCZAK
Accountant

SAMUEL NOWAK
Accountant

VISITOR SERVICES / EVENTS

MICHAEL VIELE
Director of Visitor Services

ANDREA BOLLINGER
Senior Events Manager

LEXI LANG
Front of House Manager / Event Coordinator

AMBER LYNN SIEGEL
Food & Beverage Manager

ROBERT HADLEY
Executive Chef

STEPHANIE BROEMER
Visitor Services Assistant

TECHNICAL SERVICES

HEATH HETHERINGTON
Production Director

ERIC SWEERS
Lighting Supervisor & Scenic Carpenter

CODY NELSON
Live Audio Engineer

CALEB HOPPER
Audio Engineer/Production Assistant

OLIVIA GREANIAS
Costume Shop Coordinator

FACILITIES

PAUL TREWHELLA
Facilities Director

MARCUS NOHEL
Facilities Manager: Conversion and Environmental Operations

JOHN TABOR
Maintenance Supervisor

SHANNON BISHOP
Maintenance Technician

BETH FENSKIE / DAVID HADLEY
DAVID PIETRZAK
Facilities Staff

THANK YOU TO OUR SPONSORS



The Dr. Andrea Louise Jenkins Endowed
Fund for Cultural Enrichment



Wealth
Enhancement[®]
The Gavin Team



Horizon Bank / Sport Clips Haircuts / Grace A. Dow Memorial Library
Morley Companies / Trombley Electric / Glastender, Inc / Live Oak
United Bay Community Credit Union / Covenant HealthCare / ServPro